

SWITCHES SPECIALTY & SECURITY

AC PLUG-IN DIMMER SWITCH

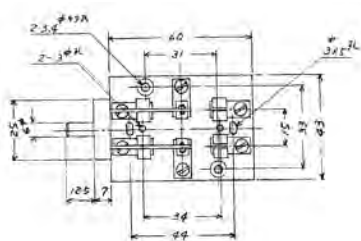


SPECIFICATIONS:

Current Rating:	3A @ 125V AC For Devices up to 150 Watts				
Contact Material:	Nickel Plated Brass				
Terminal Material:	Brass				
Terminal Type:	120V AC Plug & Jack				
Part No.	Type	Action			Actuator
30-10194	SPST	ON	-	OFF	Round Plastic Knob

Note: Not for inductive load, only for resistive load.

KNIFE SWITCH



Dimensions: 43mm x 60mm
Mounting Centers: 44mm

SPECIFICATIONS:

Current Rating:	300MA @50V AC, 500MA @ 6V DC				
Initial Contact Resistance:	15MW (Max.)				
Terminal Material:	Nickel Plated Steel				
Contact Material:	Nickel Plated Steel				
Terminal Type:	Screw				
Base Material:	ABS				
Part No.	Type	Action			Actuator
30-9730	DPDT	ON	OFF	ON	Plastic Handle

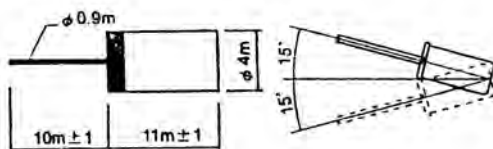
MERCURY TILT SWITCH



SPECIFICATIONS:

Current Rating:	1A @ 250V AC				
Tilt Angle:	12°				
Contact Material:	Iron Alloy/Mercury				
Terminal Material:	Copper Wire				
Terminal Type:	1.25" Wire Leads				
Part No.	Type	Action			Actuator
30-10074	SPST	Normally open or closed. Dependent upon tilt angle.			Iron Alloy/Mercury

NON MERCURY TILT SWITCH



SPECIFICATIONS:

Current Rating:	.5A @ 24V AC				
Tilt Angle:	15°				
Terminal Type:	.35" Leads				
Part No.	Type	Action			Actuator
30-17072	SPST	Normally open or closed. Dependent upon tilt angle.			