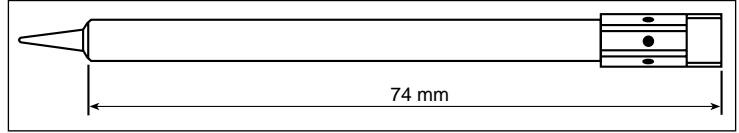
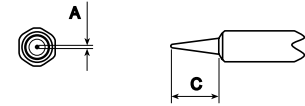


NT Series Tips for WMP Micro Soldering Pencil



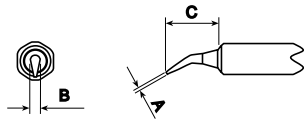
The Weller Advantage

- The heating element is contained in the pencil rather than the tip so you don't throw away a good heater every time you wear out a tip
- Gives you substantial savings on tip costs compared to the competition



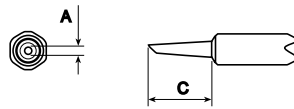
Micro

Cat. No.	A		B		C	
	in.	mm	in.	mm	in.	mm
NT1	0.010	0.25	--	--	0.291	7.40
NT1S	0.010	0.25	--	--	0.333	8.45



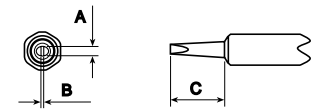
Bent Round

Cat. No.	A		B		C	
	in.	mm	in.	mm	in.	mm
NT1X	0.016	0.40	0.063	1.60	0.321	8.15



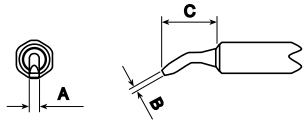
Round

Cat. No.	A		B		C	
	in.	mm	in.	mm	in.	mm
NT4	0.047	1.20	--	--	0.390	9.90



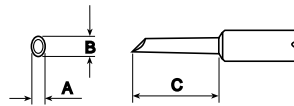
Chisel

Cat. No.	A		B		C	
	in.	mm	in.	mm	in.	mm
NT6	0.063	1.60	0.016	0.40	0.372	9.45
NTA	0.063	1.60	0.016	0.40	0.331	8.40
NTB	0.094	2.40	0.031	0.80	0.289	7.35
NTC	0.126	3.20	0.031	0.80	0.305	7.75
NTD	0.157	4.00	0.031	0.80	0.305	7.75
NTH	0.031	0.80	0.016	0.40	0.331	8.40
NTK	0.047	1.20	0.016	0.40	0.331	8.40



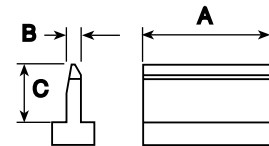
Bent Chisel

Cat. No.	A		B		C	
	in.	mm	in.	mm	in.	mm
NTAX	0.063	1.60	0.031	0.80	0.339	8.61



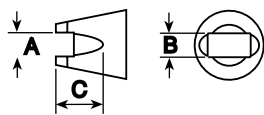
Cylindrical

Cat. No.	A		B		C	
	in.	mm	in.	mm	in.	mm
NTGW	0.079	2.00	0.118	3.00	0.528	13.40



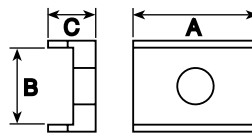
SMT Blade

Cat. No.	A		B		C	
	in.	mm	in.	mm	in.	mm
NTSMT01	0.410	10.41	0.022	0.56	0.280	7.11
NTSMT02	0.620	16.75	0.022	0.56	0.280	7.11
NTSMT03	0.820	20.83	0.022	0.56	0.280	7.11



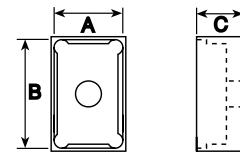
SMT Slot

Cat. No.	A		B		C	
	in.	mm	in.	mm	in.	mm
NTSMT04	0.070	1.78	0.195	4.95	0.070	1.78
NTSMT05	0.060	1.52	0.090	2.29	0.070	1.78
NTSMT06	0.100	2.54	0.068	1.73	0.055	1.40
NTSMT07	0.090	2.29	0.190	4.53	0.070	1.78



SMT Tunnel

Cat. No.	A		B		C	
	in.	mm	in.	mm	in.	mm
NTSMT08	0.180	4.57	0.200	5.08	0.090	2.29
NTSMT09	0.410	10.41	0.200	5.08	0.090	2.29
NTSMT10	0.450	11.49	0.270	6.86	0.090	2.29
NTSMT11	0.520	13.21	0.375	9.53	0.125	3.18
NTSMT12	0.620	15.75	0.375	9.53	0.125	3.18
NTSMT13	0.720	18.27	0.375	9.53	0.125	3.18
NTSMT14	0.740	18.80	0.365	9.02	0.125	3.18



SMT Quad

Cat. No.	A		B		C	
	in.	mm	in.	mm	in.	mm
NTSMT15	0.105	2.67	0.303	7.70	0.150	3.81
NTSMT16	0.410	10.41	0.410	10.41	0.150	3.81
NTSMT17	0.500	12.70	0.500	12.70	0.150	3.81
NTSMT18	0.540	13.72	0.340	8.60	0.150	3.81
NTSMT19	0.750	19.05	0.750	19.05	2.350	5.96
NTSMT20	0.915	23.24	0.680	17.27	0.150	3.81
NTSMT21	0.965	24.51	0.965	24.51	2.350	5.96
NTSMT22	1.155	29.59	1.165	29.59	2.350	5.96