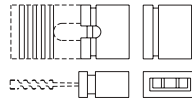


PCB MOUNT HEADERS

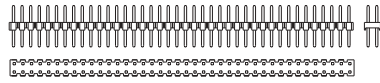


HEADER STRIPS & JUMPERS, 0.1" CENTER

- Gold Plated Square Pin
- Side Notched Strips for Cleaner Breaking
- 0.1" Centered



PLS-MJ-02/CL

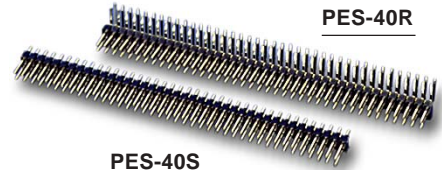


PLD-80S

PLS-40S	Single Row, Straight
PLS-40R	Single Row, Right Angle
PLD-80S	Double Row, Straight
PLD-80R	Double Row, Right Angle
PLS-MJ-02	Mini-Jumper, Open Type; Height.: 0.235"
PLS-MJ-02/CL	Mini-Jumper, Closed Type; Height.: 0.255"
PLS-MJ-02/ST	Mini-Jumper, Short Type; Height.: 0.176"
PLS-MJ-02/H	Mini-Jumper, with Handle; Height.: 0.548"

HEADER STRIPS & JUMPERS, 2.0 mm CENTER

- Gold Plated Square Pin
- Notched Strips for Cleaner Breaking
- 1.0mm Spacing
- 2.0mm Center



PES-40S

PES-40S	Single Row, Straight
PES-40R	Single Row, Right Angle
PED-80S	Double Row, Straight
PED-80R	Double Row, Right Angle
PES-MJ-02	Mini-Jumper, Open Type

BOXED HEADERS (.1"X.1")

- Gold Plated Contacts & Solder Post
- 0.1" x 0.1" Center
- Low Profile, Polarized, Fully Shrouded Body

SBH-20R



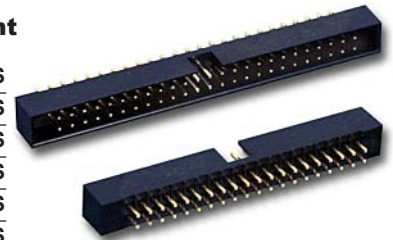
SBH-20S

Right Angle	Straight
SBH-10R	SBH-10S
SBH-14R	SBH-14S
SBH-16R	SBH-16S
SBH-20R	SBH-20S
	SBH-24S
SBH-26R	SBH-26S
SBH-30R	SBH-30S
SBH-34R	SBH-34S
SBH-40R	SBH-40S
SBH-50R	SBH-50S
SBH-60R	SBH-60S
SBH-64R	SBH-64S

BOXED HEADERS (2.00mm)

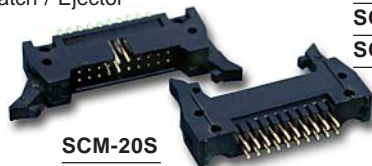
- Gold Plated Contacts & Solder Post
- 2.00mm(0.079") Centered
- Low Profile, Fully Shrouded Polarized Body

Surface Mount	Straight
SBE-12SMT	SBE-10S
SBE-20SMT	SBE-12S
SBE-22SMT	SBE-20S
SBE-34SMT	SBE-22S
SBE-40SMT	SBE-34S
SBE-44SMT	SBE-40S
SBE-50SMT	SBE-44S
SBE-68SMT	SBE-50S
	SBE-68S



LATCHED HEADERS (.1"X.1")

- Gold Plated Contacts & Solder Post
- 0.1" x 0.1" Center
- Fully Shrouded Polarized Body
- Latch / Ejector



SCM-20S

Straight

SCM-10S	SCM-30S
SCM-14S	SCM-34S
SCM-16S	SCM-40S
SCM-20S	SCM-44S
SCM-26S	SCM-50S
	SCM-60S
	SCM-64S



SCM-20R

Right Angle

SCM-10R	SCM-34R
SCM-14R	SCM-40R
SCM-16R	SCM-44R
SCM-20R	SCM-50R
SCM-24R	SCM-60R
SCM-26R	SCM-64R
SCM-30R	